

SMOKE oasis[®]

*... the solution for
smoking-areas*

SmokeOasis® – the innovative concept for smoking zones

Are you looking for an efficient collection and filtration of tobacco-smoke, -gases and odours?

This system is multi-functional and creates a pleasant "oasis-feeling" for its' users, wether smokers or non-smokers! This high-tech device does not only eliminate harmful smoking fumes with a superior performance, but it is at the same time a piece of architectural design.

Our multi-user concept with its unique "DuoJetStream"-lighthoods can be installed in: airports, smoking-lounges, hotels-lobbies, smoking rooms of restaurants, bars, cinemas, social rooms of companies, canteens, schools, expos and trade fair centres, events, ...

The range of application includes: meeting points, communication islands, advertising media, social corner, lighted hoods, etc.

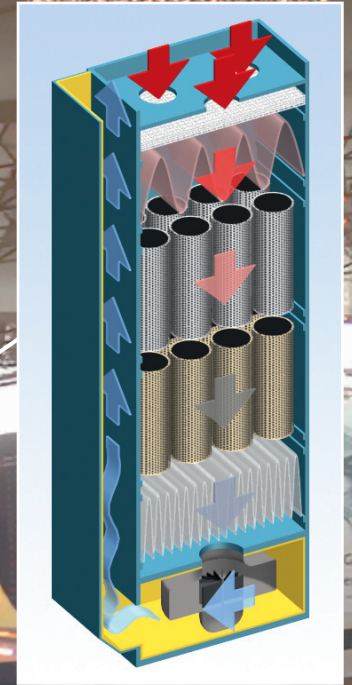
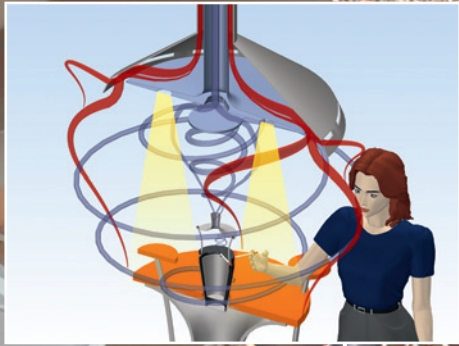
SmokeOasis® differs from other systems on the market due to the fact, that it really works!

Its developers have got extensive know-how and experience in air-fluid engineering, as well as in the elimination of undesirable emissions and odours. Is SmokeOasis® suitable for your business?
We look forward to hearing from you!



... we have a good feeling!

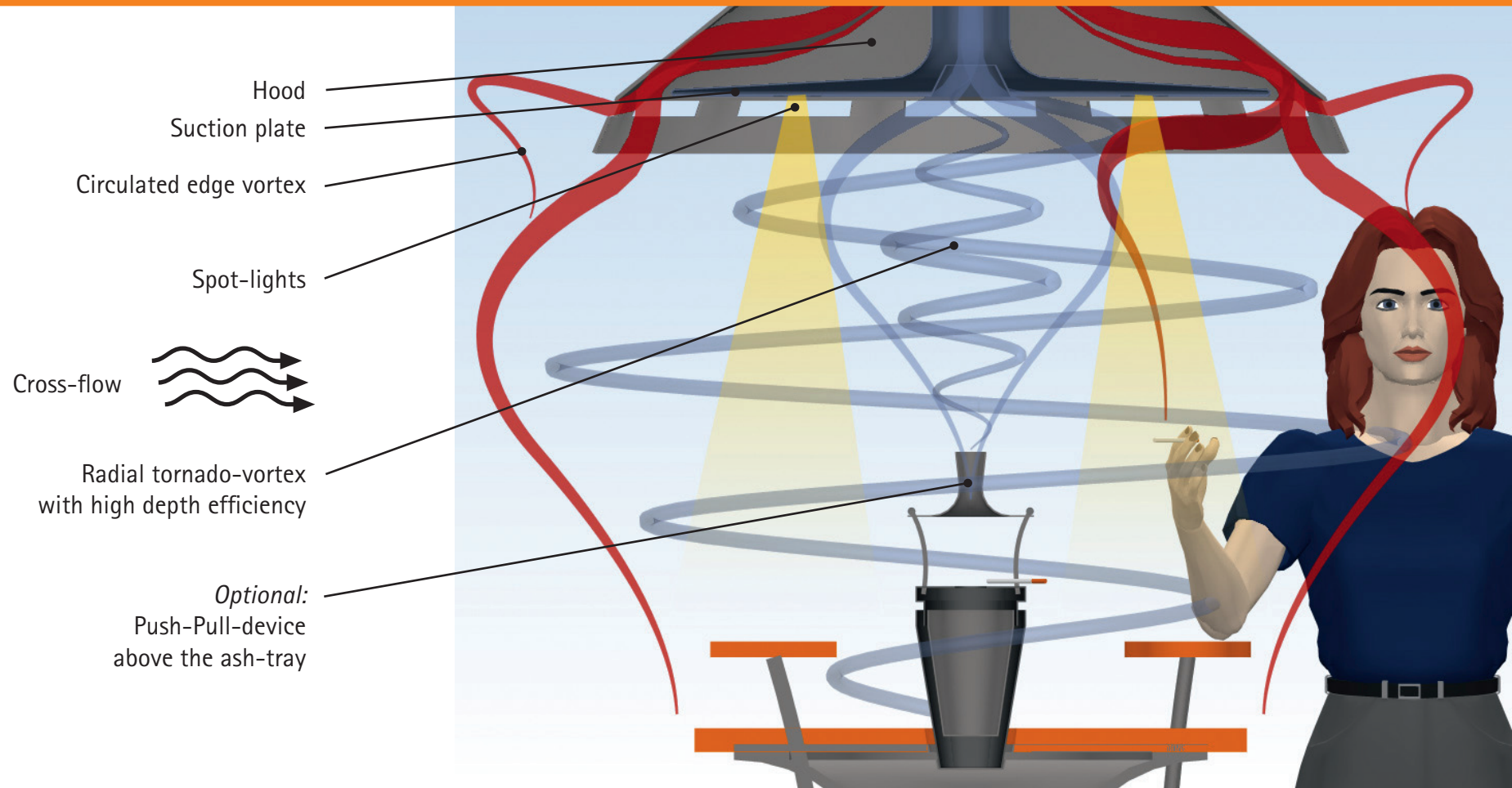


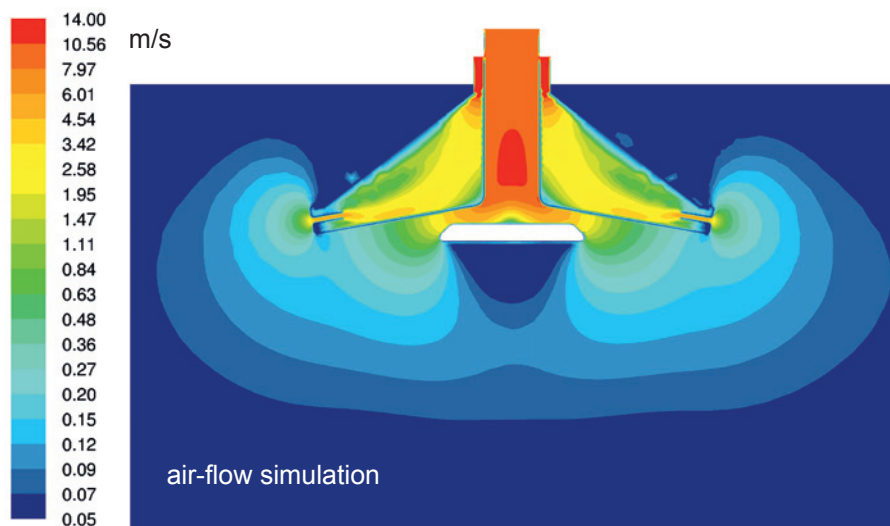


Creating a smoke free environment and other benefits ...

- **Efficient collection of particles, gases and odours:** Only particles, fumes, gases and other harmful substances which are completely sucked in, can be filtered or transported into free atmosphere by a fan. Our patented 'DuoJetStream' light-hood ensures, that the collection performance is as high as possible.
- **Multi-stage filtration unit:** Recirculating the air into the room demands best available filter technology available on the world market. The design of our filtration unit fulfils the statutory requirements in the latest German legislation for the remaining concentration of different gas-components, odours and fine particles from the harmful substances in tobacco smoke.
- **Comfort for smokers and non-smokers:** Our motto is: "No discrimination of smokers, but high protection of non-smokers!". SmokeOasis guarantees this with its completely open and communicative design. We do not force the smokers to hold their cigarettes in a certain manner, as they need to feel free in their habits.
- **Economic operation:** The built-in filter elements have acceptable life- and service-span. Our ash-module offers a large volume for stubs, so the disposal intervals are extended. We do not want to earn our money with special service-contracts!
- **Additional benefits:** SmokeOasis, type Octopus offers a large advertising surface, it is possible to integrate slot-machines or flat-screens, etc.
- **Safety and Fire-protection:** Nobody, in particular criminals should be able to manipulate the system. Therefore it can only be opened with a special key by authorised service-staff. For the purpose of fire-protection it is possible to order a fire-detector sending a signal to the technical control centre of e.g. the airport-fire-brigade.
- **Legislation:** The system is designed on the basis of the latest technical standards and ensures, that you, our customer, comply with the current legislation in your country concerning the protection of non-smokers against passive-smoking.

Patented DuoJetStream-technology





The DJS-principle is based on two independent flows of air created by a pipe-in-pipe system, which causes a centric as well as a horizontal vacuum similar like a tornado.

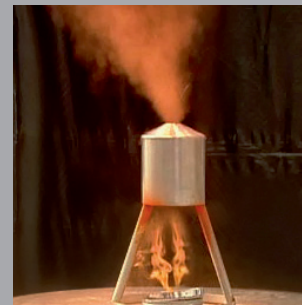
An expert opinion of a recognized independent Institute confirms the high efficiency of our patented collection device.

The slope of the suction plate plus the integrated lights accelerate the natural and thermal air-flow towards the opening. Tobacco smoke is therefore collected safely. The slotted circle creates an edge vortex, which catches even those emissions seemingly drifting away.

Integrated infrared-sensors allow an energy-saving operation and do protect the filters. The DJS-hoods only operate, when people are standing around the special smoking table. The signal of the IR-sensor controls a flap-system as well as the speed of the fan.

In the case of strong cross-flows we can offer an optional Push-Pull-device above the ashtray. This device creates an induced air-flow up to the centre of the DJS-lighted hood.

Furthermore loudspeakers for sound systems can be integrated into the suction plates.



Filtertower/electronic-control panel

Tobacco smoke consists of fine-particles, odours and a wide variety of harmful and carcinogenic gases, such as nicotine, aldehydes and carbonmonoxide. This "cocktail" of poisonous substances needs to be filtered using the best available filtration technology, if the customer wants to recirculate the air.

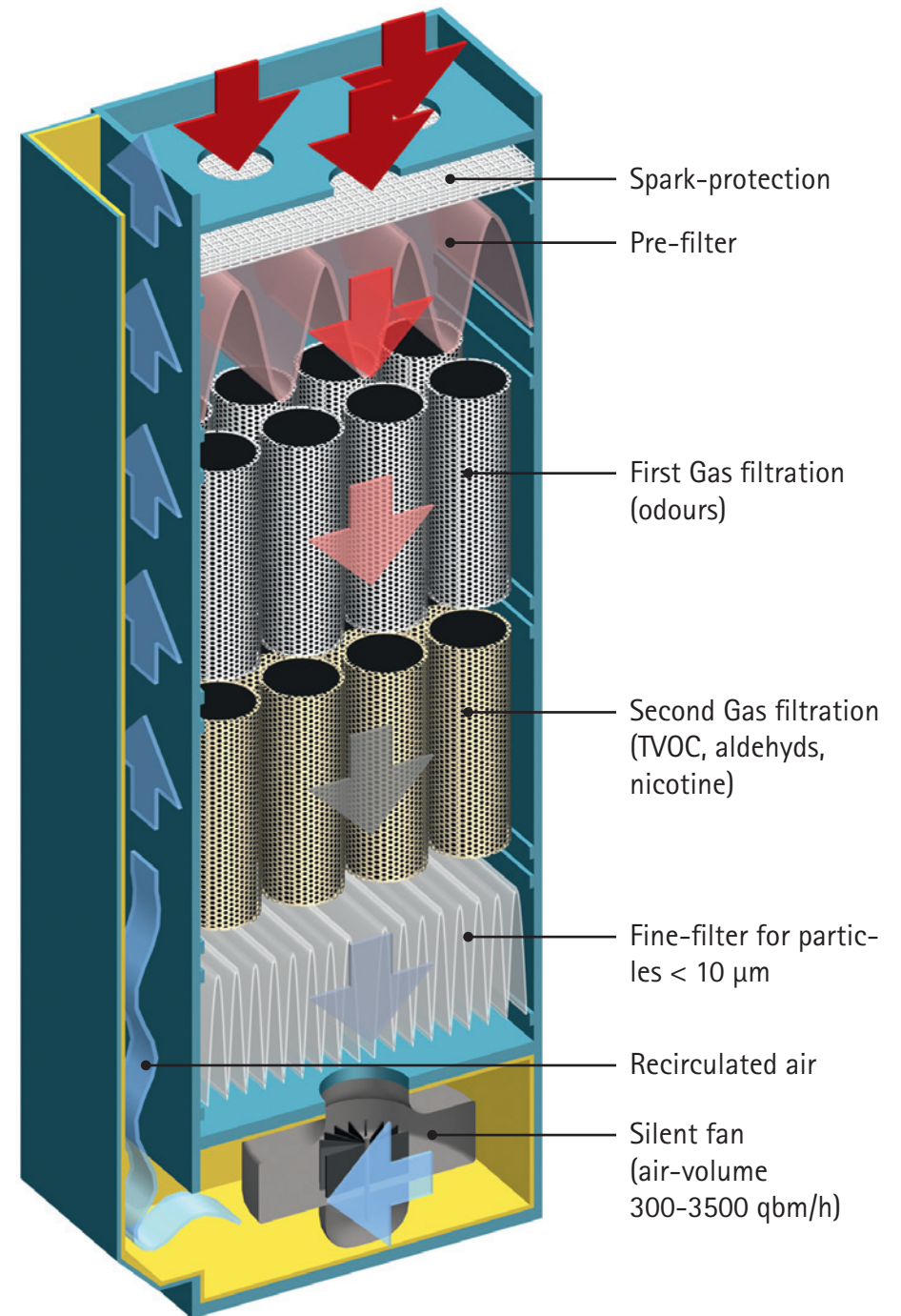
We use approved and certified filter-elements provided by well-known suppliers.

Our filter tower consists of five stages and has been designed for a 24 hour operation modus. The volume of the filters offers long life times and extended service intervals. This also ensures, that the filtration material, which in stages two and three mainly consists of activated carbon, does not emit its own odours after a while.

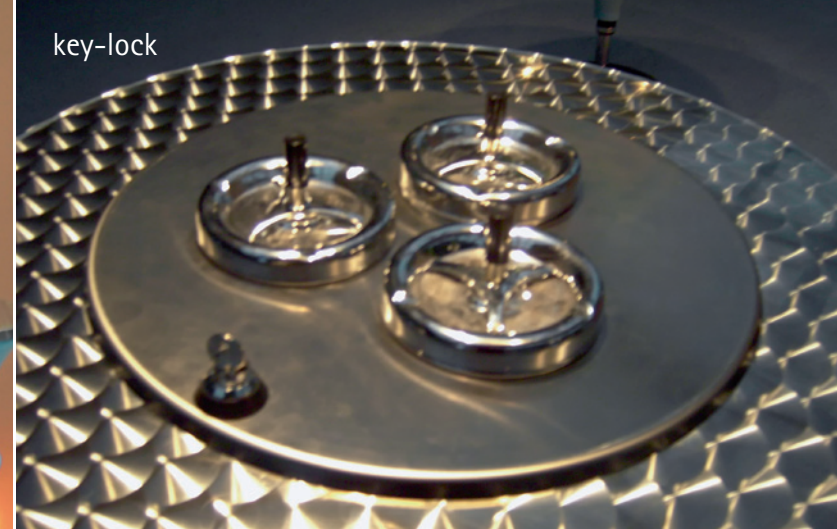
Residual emissions will be lower than the statutory concentrations in your country. It is our aim to provide a filtered air-quality, which is as clean as it was before cigarettes were lit in the room.

The compact electronic-panel controls the automatic operation and responds to signals sent by the different sensors. Optionally we can install fire-detectors to send off signals in case of a fire.

The fan is completely sound insulated and guarantees an emission < 55 dB(A).



Patented XXL-ash tray and Ergonomic furniture



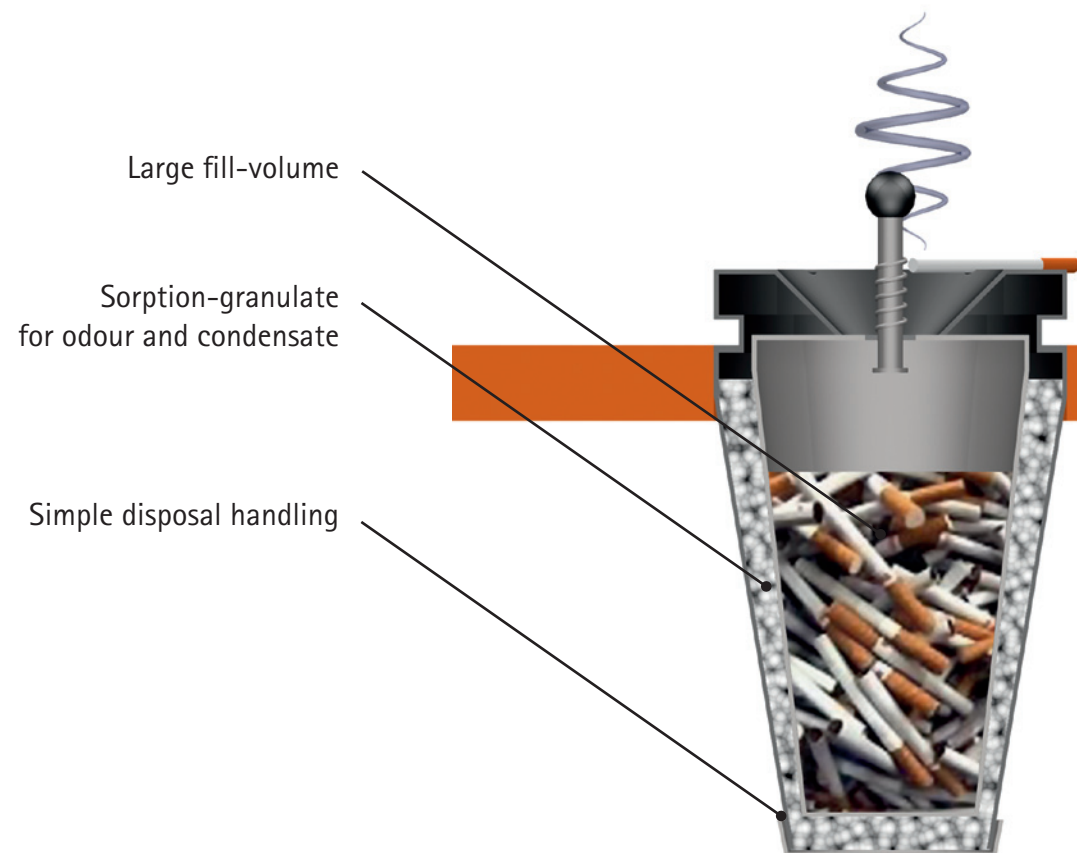
Our XXL-ashtray provides a big fill-volume and an integrated odour reduction.

A special sorption granulate absorbs unpleasant odours and condensation of the stubs.

The disposal handling is simple and a key-lock ensures, that the ash tray can only be opened by authorized personnel.

Finally we offer matching smoking tables, seats and other kind of furniture, which we can deliver in the requested design.

Please ask for our different finance-models, i.e. leasing, rent, etc.



Our solutions ...

These are possible design samples. We are able to offer you customized design for materials, colours, surface finishes, integrated slot-machines, flat-screens, etc.

Please do not hesitate to ask your requirements!



Bar / Coffee-shop-Design



Cabin-Design



Octopus, Advertisement-column



Terminal-Design



Octopus, Quattro-Design

... here could appear
your design!



Lounge-Design



Made in Germany. 